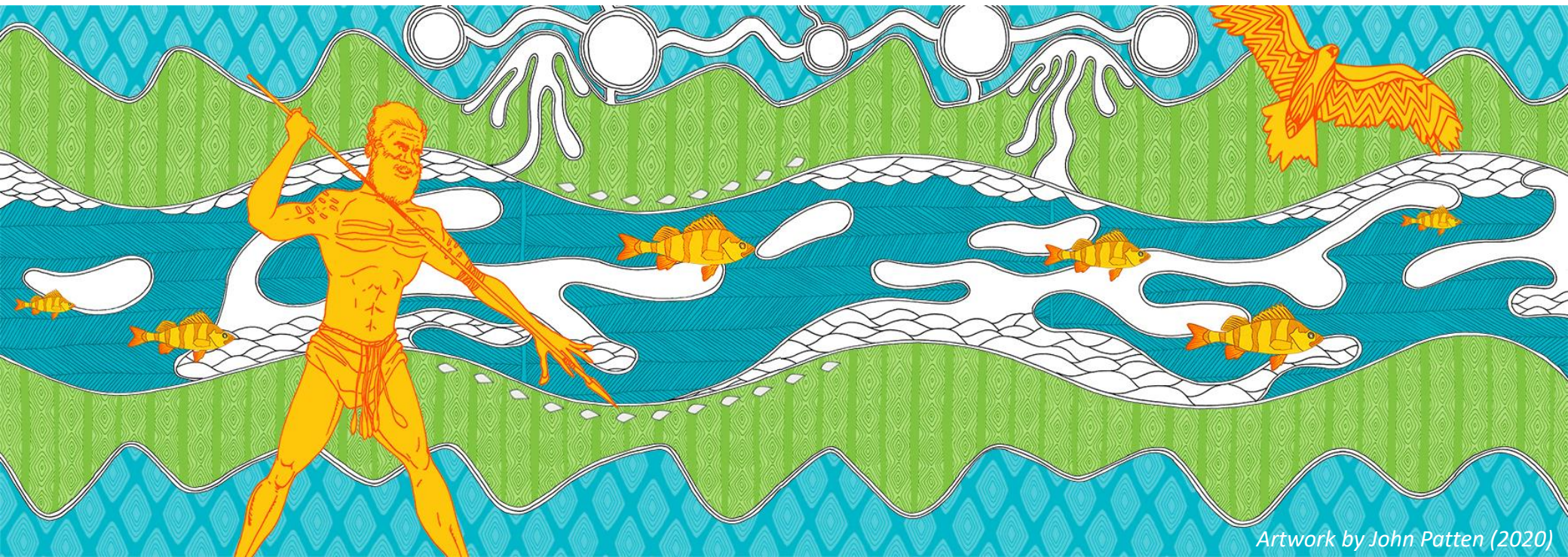




Dulap Wilim Hub Sunbury



How the Hub began

The Sunbury Joint School Community Hub project commenced in 2016 and sought to improve community infrastructure in the western part of Sunbury by developing a first-class, multi-purpose Hub. The opportunity to strengthen the education precinct with other community services, connecting students, families, volunteers, community and local government service providers was a deliberate approach to;

- promote social inclusion,
- create opportunities for participation by all age groups and
- strengthen community connections.

The project was a joint proposal led by Sunbury Heights Primary School, Sunbury Downs College and Hume City Council. The Hub is constructed across the boundaries of Sunbury Heights Primary School and Sunbury Downs College, delivering to the local community, a new modern facility to accommodate both school and community programs. The Hub is a place for learning, connecting and strengthening community. The Hub opened in 2020.

The Hub facilities include:

- Flexible multi-purpose meeting spaces to accommodate groups of 20-120 persons.
- Small meeting spaces and consulting/interview rooms;
- Commercial kitchen offering space for training and to support culturally themed events and activities,
- A dedicated early years playroom to support the delivery of early years and family programs supported by Community Hubs Australia and other early-years program providers.
- A two room Preschool to deliver structured kindergarten programs and
- Two Modern teaching kitchens to support the delivery of the extensive secondary school cookery programs.

The Hub includes facilities available for community use and hire, including outside school operating hours.

Hub Name

Giving the Hub a name was an important process in the development of the facility as the project development team wanted the Hub name to reflect the Hub Vision, acknowledge the past and reflect the aspirations of the local community.

Dulap Wilim is Wurundjeri meaning; *Proud Place* and was chosen to convey;

- respect to the aboriginal ancestors of the land, the Hub is built upon,
- affirm the current and arriving communities residing close to the Hub and to
- inspire the future generations who will attend the schools and participate in Hub programs.

Hub Vision

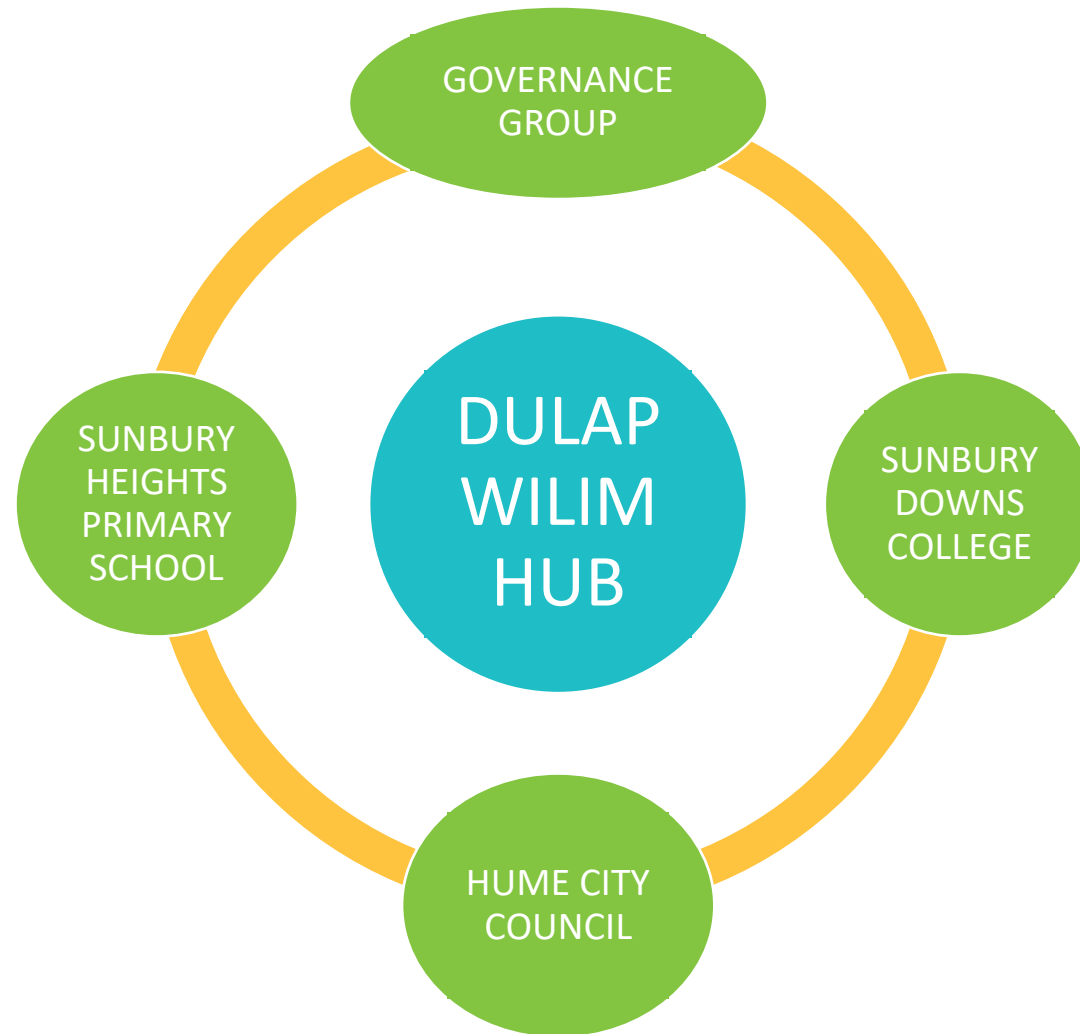
The Vision that guided the development of the Hub included:

To deliver a COMPACT and URBAN experience in a LIVEABLE neighbourhood, NETWORKED and CONNECTED socially, virtually, and physically.

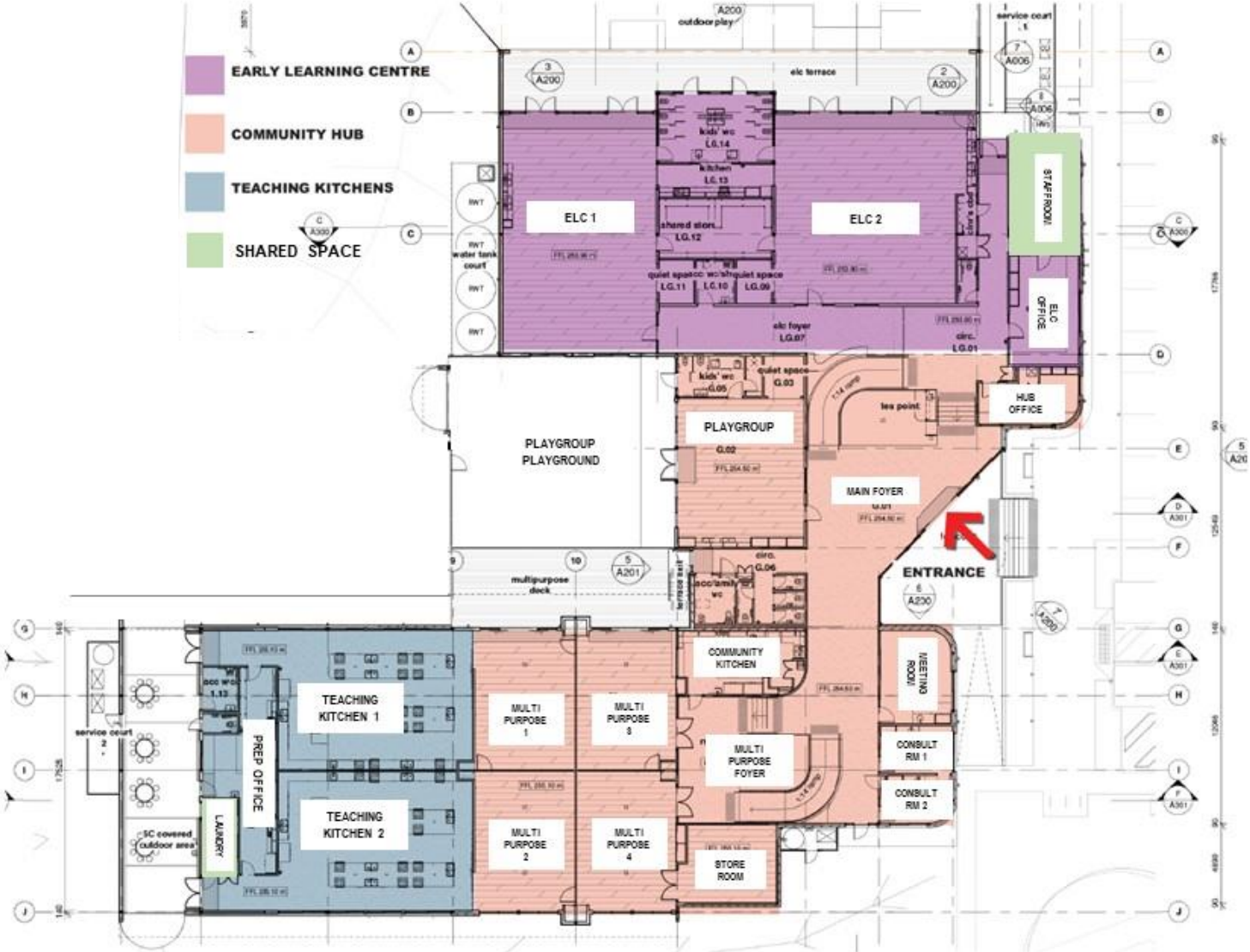
To deliver an ENGAGING and ECLECTIC ENVIRONMENT that facilitates “a live, work, study, and play way of life” and informed by a range of aspirations;

- To create a welcoming place.
- To consolidate local education, services, through the provision of playgroup/ preschool and adult education services on one site.
- To provide a multi-purpose space with commercial kitchen facilities for training and cultural events/activities
- To provide access to a range of services including Occupational/Speech Therapy, University of Third Age.
- To provide a collaborative public space that provides platforms for formal and informal education and socialization;
- To embed active recreational opportunities and ensure adequate green space.
- Design spaces that can be used for multiple purposes;
- Deliver a program of cultural, social and recreational activities.
- Offer a social program that keeps the Hub alive in the evenings and the weekends - *always something ON.*
- Provides a real reason to visit or stay beyond attending preschool or primary and secondary school.
- Build community connections through flexible spaces to fit the needs of different groups and ages
- Encourage learning and employment opportunities through informal learning.
- Offer Health and wellbeing opportunities to improve self and community health
- Support opportunities for community groups to get together, share experiences and cultures and showcase how social inclusion benefits local neighbourhoods and towns.

Hub Partners



Floor Plan



Spaces Available

Space	Maximum Capacity
Community Kitchen (Commercial standard)	Can cater for 120 people
Multi Purpose Room (large x4 space)	120 people (theatre style) 100 people (seated tables)
Multi Purpose Room (medium x2 space)	60 people (theatre style) 50 people (seated tables)
Multi Purpose Room (small x1 space)	30 people (theatre style) 25 people (seated tables)
Meeting Room	12 people (seated)
Consulting Room 1	4 people (seated)
Consulting Room 2	4 people (seated)
Playgroup (including outdoor play space)	25 children (seated)

Fee Schedule

A three-tier fee structure applied to each component of the Hub and applied based on the status of the organisation hiring the facility.

Commercial / Private Rate:

- applied to any individual or a for profit organisation / private business this would include a private education training and tutoring group or a privately run activity program, where fees are charged.

Government Rate:

- applied to any organisation that is an arm of the Government (Federal, State or Local) or predominantly funded by a government program. For example; registered training authorities, Tafes, Neighbourhood Houses or community health programs, funded by childcare services.

Community Rate:

- applied to groups and clubs that are incorporated and run by volunteers and are not for profit entities.

There may be grounds for special consideration for a fee waiver or reduction and this will be subject to negotiation with DWH Management.

2023 Hire Fees (per hour)

Space	Commercial / Private Hirer	Government	Community NFP Groups
Community Kitchen (Commercial standard)	\$27.00	\$20.00	\$15.00
Multi Purpose Room (large) inc. Community Kitchen (for a function)	\$400.00 (up to 6 hours)	\$350.00 (up to 6 hours)	\$300.00 (up to 6 hours)
Multi Purpose Room (large x4 space)	\$60.00	\$48.00	\$35.00
Multi Purpose Room (medium x2 space)	\$35.00	\$28.00	\$20.00
Multi Purpose Room (small x1 space)	\$25.00	\$20.00	\$15.00
Meeting Room	\$22.00	\$18.00	\$10.00
Consulting Room 1	\$20.00	\$15.00	\$8.00
Consulting Room 2	\$20.00	\$15.00	\$8.00
Playgroup (including outdoor play space)	\$25.00	\$20.00	\$15.00

Contact Details

The DWH is situated at the end of Leichardt Street in Sunbury, between Sunbury Heights Primary School and Sunbury Downs Secondary College.

The facility is under the management of Sunbury Heights Primary School and all enquiries should be directed as follows.

To make a booking or enquiry, please contact:

Sharon Ramunno (Community Hub Co-ordinator)
Telephone: 03 9732 0183